

Hardware requirements:

- (4) 12M x 45 Bolt
- (2) 12M x 100 Bolt
- (6) 12M Locking Nuts
- (8) 12M Washers

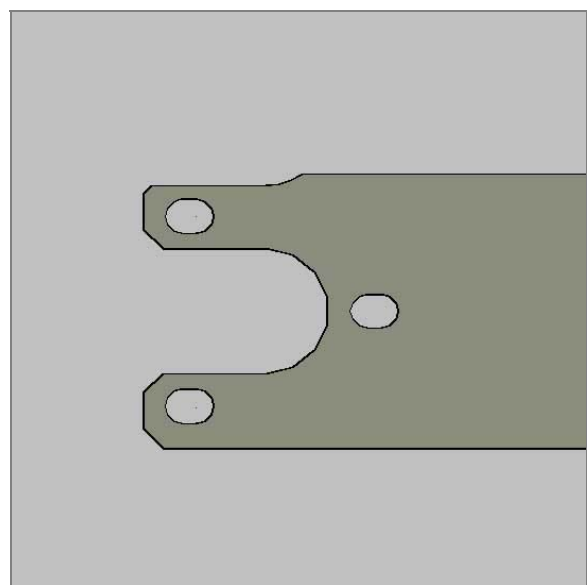
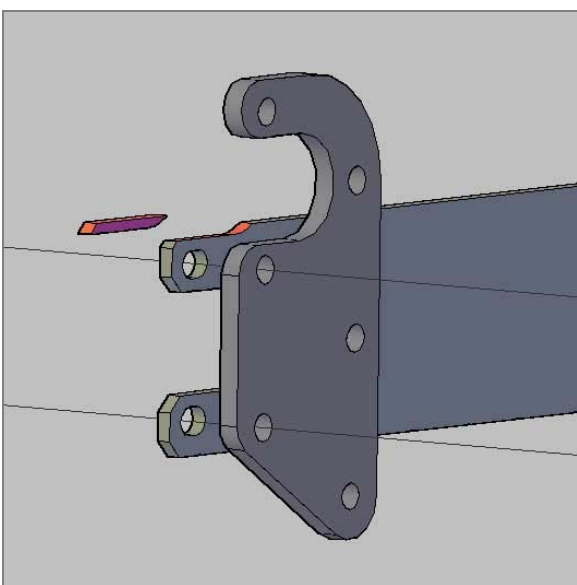
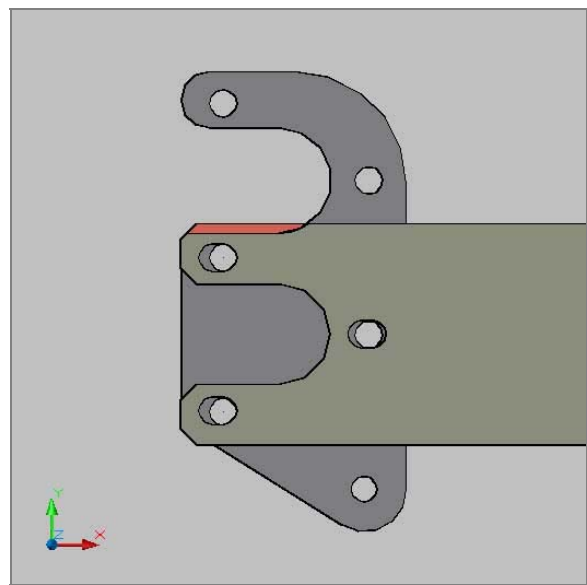
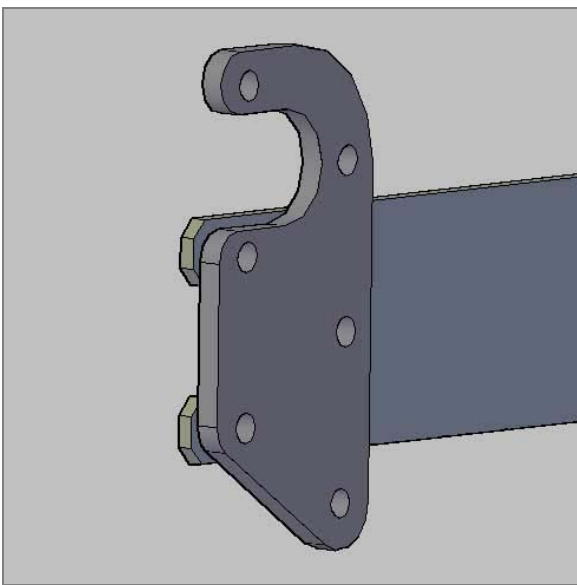
The washers act as spacers for the top 2 bolts, 2 for each bolt. They need to equal the thickness of the spring plate.

2 modifications are required for installing these Drop Extensions. The first is cutting off the original lower shock mount. It's a horizontal cut parallel to the spring plate, just under the spring plate, as shown below.



The second mod is on the spring plate itself. The area highlighted in red must be shaved off of the spring plate for the axle to fit. 1/8 of an inch is all that needs to be removed. These 2 sets of photos show how it's done.

*Note: You might be able to squeeze the axle in there with out shaving the spring plate, but it will pinch the axle tube and put additional stress on the hardware. DON'T DO THAT! ☺



Here are some actual photos of the same modification.



Lastly, your e-brake cables will route over the spring plates, not under as there were in the stock position.